

# 客户图

## NOTES:

### .FINISH:

- 1.1 HOUSING: BLACK,UL94 V-0
- 1.2 CONTACT: COPPER ALLOY, GOLD (SEE P/N) PLATED IN CONTACT AREA, GOLD FLASH PLATED IN SOLDER AREA, 50u"MIN NICKEL UNDERPLATED OVERALL.

## 2. ELECTRICAL:

- 2.1 CURRENT RATING: 0.5A AMP.PER CONTACTS,
- 2.2 DIELECTRIC WITHSTANDING VOLTAGE: 200VAC/Minute
- 2.3 CONTACT RESISTANCE: 55mΩ MAX.
- 2.4 INSULATION RESISTANCE: 1000 mΩ Min
- 2.5 Operation Temperature:-40°C to105°C

## 3.SALT SPRAY TEST:

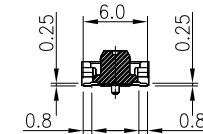
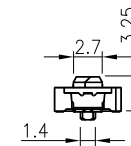
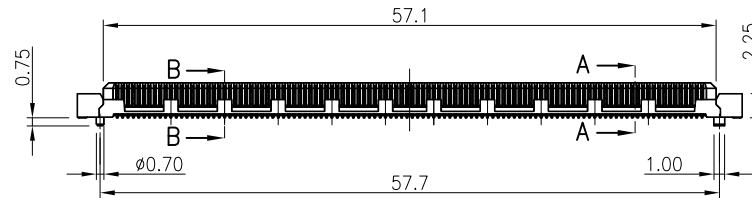
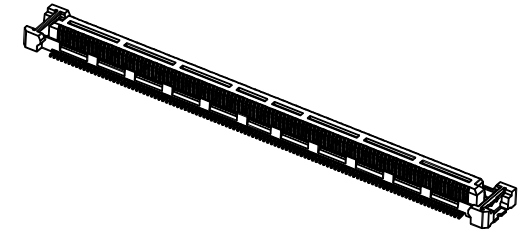
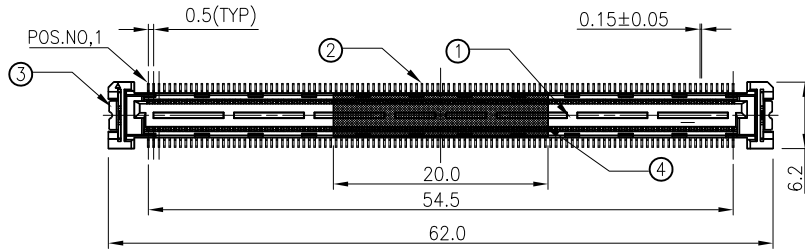
- 3.1 CONCENTRATION IS 5%, THE TEMPERATURE IS 35±2°C, TEST TIME 8H MIN,NO OXIDATION OR RUST

## 4.Max Processing Temp:265°C Seconds 40S

## 5.ORDER INFORMATION:

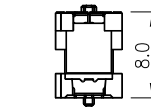
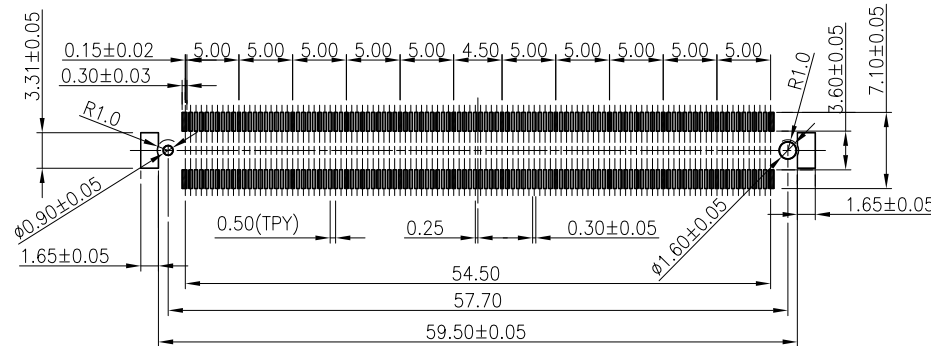
66A5-M 220 SX 032 X 01

Pin数码	端子电镀:	高度:	封装:
SEE TABLE	SN=Gold TIN	032=3.25mm	P=TUBE+CAP
220=2*110PIN	S1=1u"Gold/Tin		R=TAPE REEL
	S2=3u"Gold/Tin		
	S3=5u"Gold/Tin		
	S4=10u"Gold/Tin		



SECTION A-A

SECTION B-B



MATED CONDITION

REFERENCE PCB LAYOUT

④	PI-FILM	POLYSTYRENE	1	
③	METAL EAR	STAINLESS STEEL	2	Sn PLATING ON SOLDER AREA
②	CONTACT	COPPER ALLOY	220	Au PLATING ON CONTACT AREA Au PLATING ON SOLDER AREA
①	HOUSING	THERMOPLASTIC	1	COLOR:BLACK ,UL94V-0
ITEM	DESCRIPTION	MATERIAL	QT.Y	REMARK

					OPERATION	DRAW	Mr.Zeng	2024.04.20	<b>SOLEPIN</b> 东莞市硕品电子有限公司 Professional connector manufacturer DONGGUAN SOLEPIN ELECTRONICS CO., LTD.					
					X.X ±0.40	DESIGN	Jensen	2024.04.20						
					X.XX ±0.25	CHECK	Jack	2024.04.20						
					X.XXX ±0.15	APPROVE	Andy	2024.04.20						
AO		NEW			Angle ±3°	APPROVE			SIZE	A4	PART NO.	66A5-M 220 SX 032 X 01		
REV	DATE	MODIFICATION DESCRIPTION	CHANGE	APPROVE	DIM.	TOL	UNIT	mm	SCALE	1:1	SHEET	1/1	TITLE:	CUSTOMER DRAWING
									PROJ.	☞☜	DRAW NO.	SP-1115		

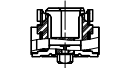
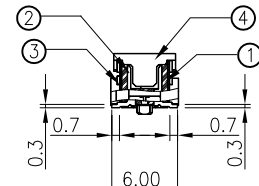
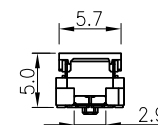
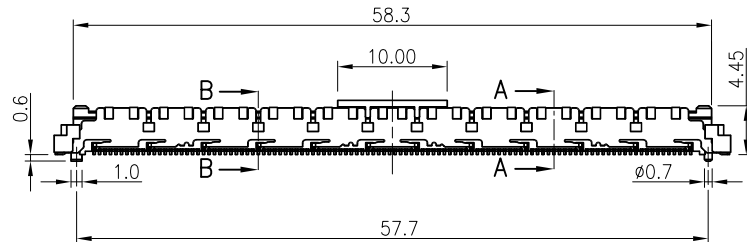
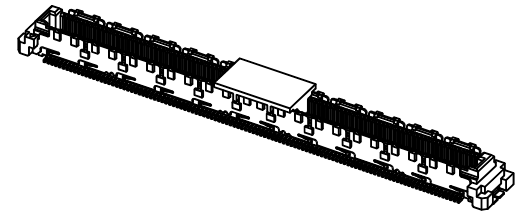
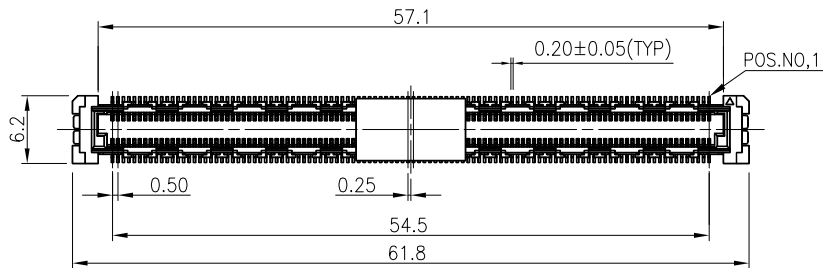
# 客户图

## NOTES:

- .FINISH:  
 1.1 HOUSING: BLACK,UL94 V-0  
 1.2 CONTACT: COPPER ALLOY, GOLD (SEE P/N) PLATED IN CONTACT AREA, GOLD FLASH PLATED IN SOLDER AREA, 50u"MIN NICKEL UNDERPLATED OVERALL.
2. ELECTRICAL:  
 2.1 CURRENT RATING: 0.5A AMP.PER CONTACTS,  
 2.2 DIELECTRIC WITHSTANDING VOLTAGE: 200VAC/Minute  
 2.3 CONTACT RESISTANCE: 55mΩ MAX.  
 2.4 INSULATION RESISTANCE: 1000 mΩ Min  
 2.5 Operation Temperature:-40°C to105°C
- 3.SALT SPRAY TEST:  
 3.1 CONCENTRATION IS 5%, THE TEMPERATURE IS 35±2°C, TEST TIME 8H MIN,NO OXIDATION OR RUST
- 4.Max Processing Temp:265°C Seconds 40S
- 5.ORDER INFORMATION:

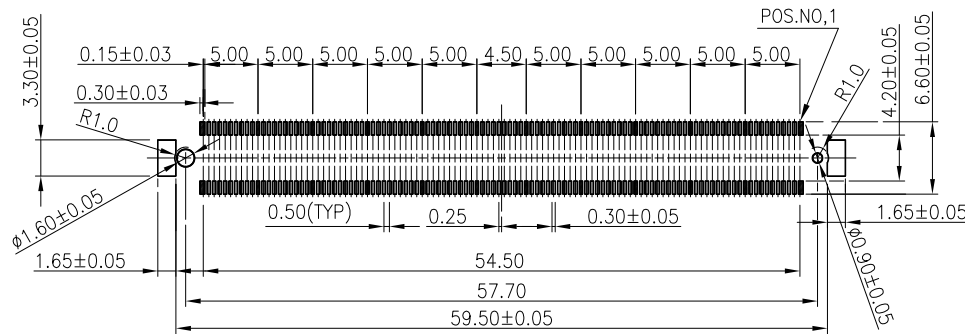
66A5-M 220 SX 050 X 01

Pin数码	端子电镀:	高度:	封装:
SEE TABLE	SN=Gold TIN	050=5.00mm	P=TUBE+CAP
220=2*110PIN	S1=1u"Gold/Tin		R=TAPE REEL
	S2=3u"Gold/Tin		
	S3=5u"Gold/Tin		
	S4=10u"Gold/Tin		



SECTION A-A

SECTION B-B



MATED CONDITION

④	PICK-UP CAP	THEROPLSTIC	1	
③	METAL SHELL	COPPER ALLOY	2	Pd FLATING ON SOLDER AREA
②	CONTACT	COPPER ALLOY	220	Au PLATING ON CONTACT AREA Au PLATING ON SOLDER AREA
①	HOUSING	THERMOPLASTIC	1	COLOR:BLACK ,UL94V-0
ITEM	DESCRIPTION	MATERIAL	QT.Y	REMARK

				OPERATION		DRAW		Mr.Zeng		2024.04.20		<b>SOLEPIN</b> 东莞市硕品电子有限公司 Professional connector manufacturer DONGGUAN SOLEPIN ELECTRONICS CO., LTD.			
				X.X ±0.40		DESIGN		Jensen		2024.04.20					
				X.XX ±0.25		CHECK		Jack		2024.04.20					
				X.XXX ±0.15		APPROVE		Andy		2024.04.20					
AO	NEW									SIZE	A4	PART NO.	66A5-M 220 SX 050 X 01		
REV	DATE	MODIFICATION DESCRIPTION		CHANGE	APPROVE	DIM.	TOL	UNIT	mm	SCALE	1:1	SHEET	1/1	TITLE:	CUSTOMER DRAWING
												PROJ.	SP-1116	DRAW NO.	

# 客户图

## NOTES:

### .FINISH:

- 1.1 HOUSING: BLACK,UL94 V-0
- 1.2 CONTACT: COPPER ALLOY, GOLD (SEE P/N) PLATED IN CONTACT AREA, GOLD FLASH PLATED IN SOLDER AREA, 50u"MIN NICKEL UNDERPLATED OVERALL.

### 2. ELECTRICAL:

- 2.1 CURRENT RATING: 0.5A AMP.PER CONTACTS,
- 2.2 DIELECTRIC WITHSTANDING VOLTAGE: 200VAC/Minute
- 2.3 CONTACT RESISTANCE: 55mΩ MAX.
- 2.4 INSULATION RESISTANCE: 1000 mΩ Min
- 2.5 Operation Temperature:-40°C to105°C

### 3.SALT SPRAY TEST:

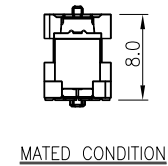
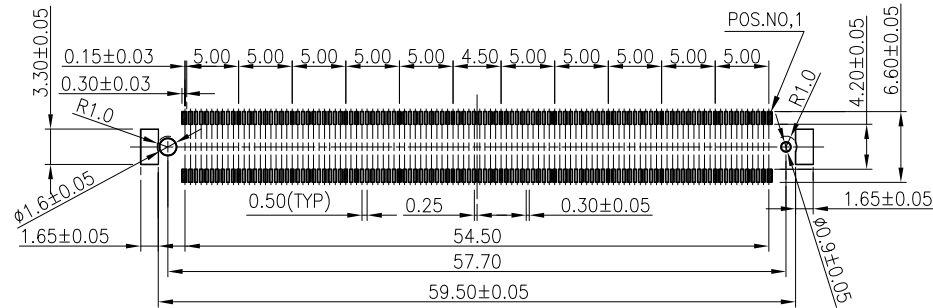
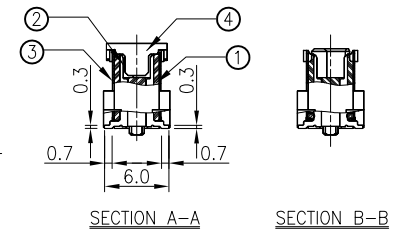
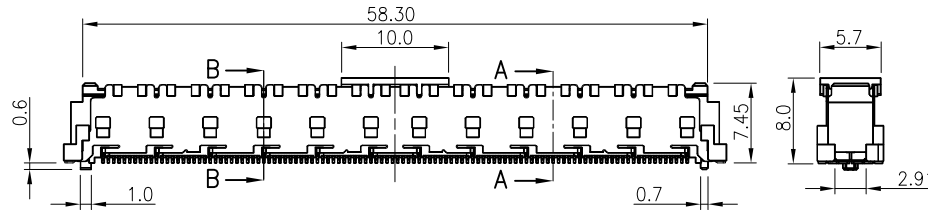
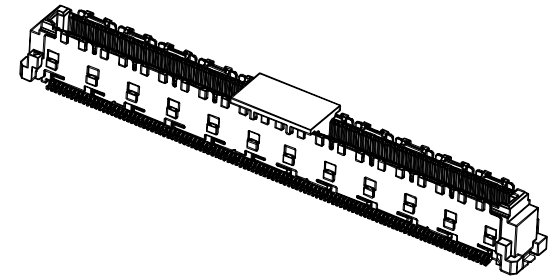
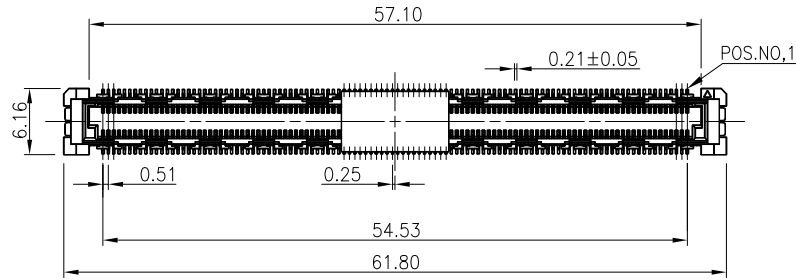
- 3.1 CONCENTRATION IS 5%, THE TEMPERATURE IS 35±2°C, TEST TIME 8H MIN,NO OXIDATION OR RUST

### 4.Max Processing Temp:265°C Seconds 40S

### 5.ORDER INFORMATION:

66A5-M 220 SX 080 X 01

Pin数码 SEE TABLE 220=2*110PIN	端子电镀: SN=Gold TIN S1=1u"Gold/Tin S2=3u"Gold/Tin S3=5u"Gold/Tin S4=10u"Gold/Tin	高度: 080=8.00mm	封装: P=TUBE+CAP R=TAPE REEL
------------------------------------	---	-------------------	----------------------------------



④	PICK-UP CAP	THEROPLSTIC	1	
③	METAL SHELL	COPPER ALLOY	2	Pd FLATING ON SOLDER AREA
②	CONTACT	COPPER ALLOY	220	Au PLATING ON CONTACT AREA Au PLATING ON SOLDER AREA
①	HOUSING	THERMOPLASTIC	1	COLOR:BLACK ,UL94V-0
ITEM	DESCRIPTION	MATERIAL	QT.Y	REMARK

					OPERATION	DRAW	Mr.Zeng	2024.04.20
					X.X ±0.40	DESIGN	Jensen	2024.04.20
					X.XX ±0.25	CHECK	Jack	2024.04.20
					X.XXX ±0.15	APPROVE	Andy	2024.04.20
AO		NEW			Angle ±3°	UNIT	mm	SCALE 1:1
REV	DATE	MODIFICATION DESCRIPTION	CHANGE	APPROVE	DIM. TOL	UNIT	mm	SCALE 1:1

**SOLEPIN** 东莞市硕品电子有限公司  
Professional connector manufacturer DONGGUAN SOLEPIN ELECTRONICS CO., LTD.

SIZE	A4	PART NO.	66A5-M 220 SX 080 X 01
SHEET	1/1	TITLE:	CUSTOMER DRAWING
PROJ.	☯	DRAW NO.	SP-1117